

# 86 Thurmond Crescent, Winchester, Hampshire, SO22 4DH

Change of use of 86 Thurmond Crescent from its current classification under Use Class C4 (House in Multiple Occupation) to Use Class C2 (Residential Institution). The proposed change will facilitate the establishment of a small children's residential care home.

Application Number: 25/01617/FUL

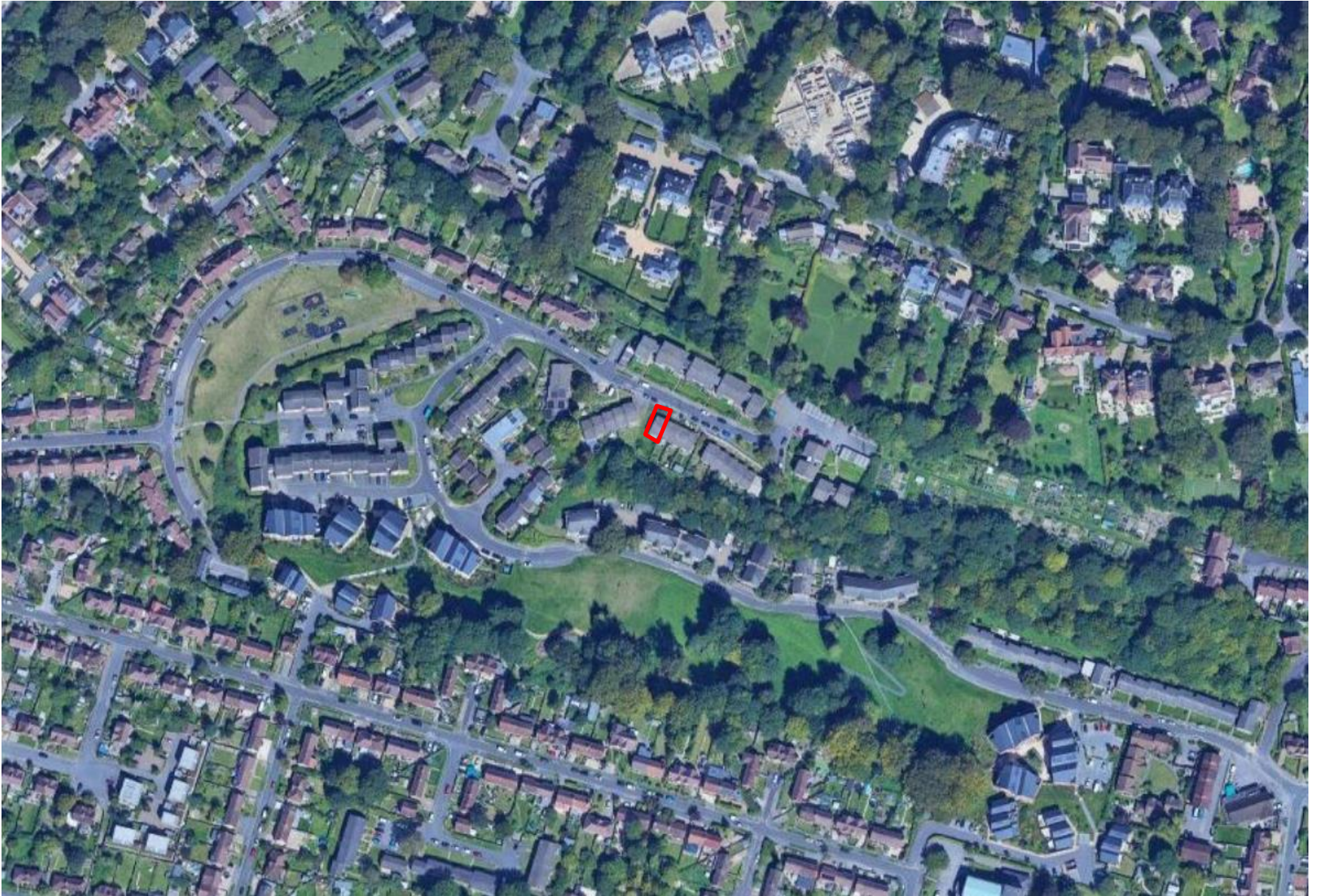


## Location Plan





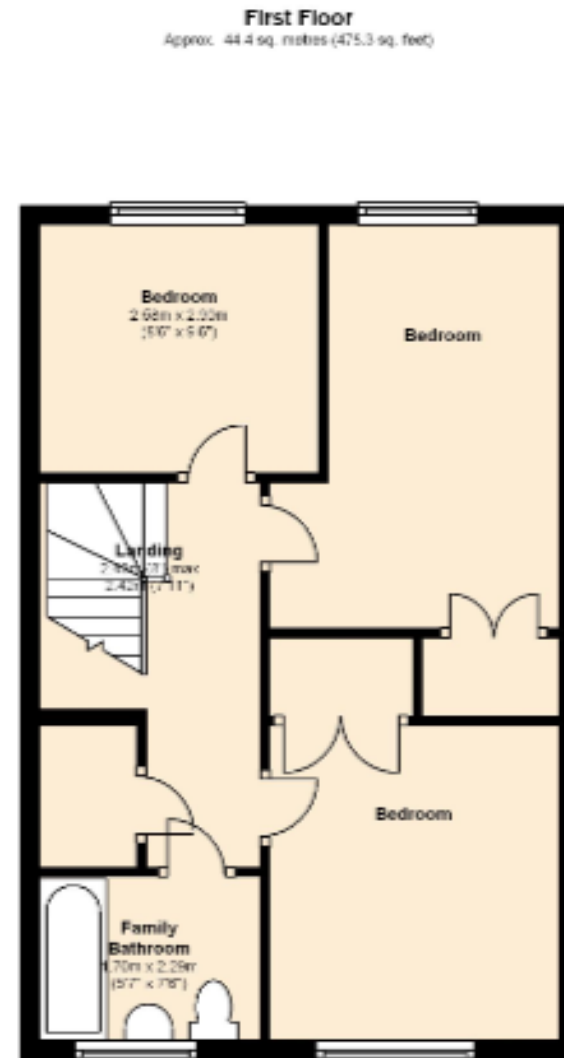
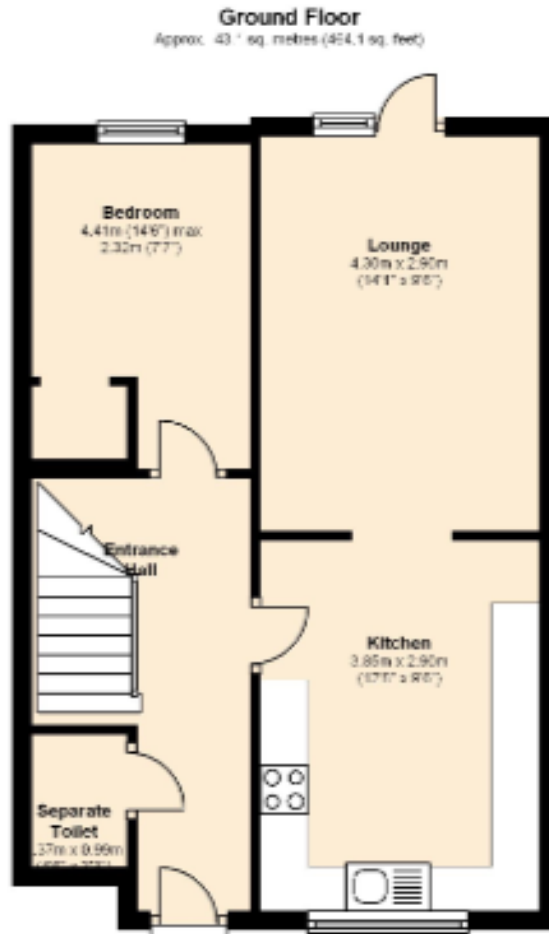
## Aerial







## Floor Plans (to remain as existing). No proposed external changes.





## Photographs of the site





## Photographs of the site



## Photographs of the site





# **RECOMMENDATION - APPROVE**

Proposal complies with Local Plan policies as set out within the report.